

# PRODUCT SPEC

## 10/100 BASE-T Single PORT DIP TRANSFORMER MODULE

Designed To Meet IEEE 802.3 & ANSI X 3.263 Standards.

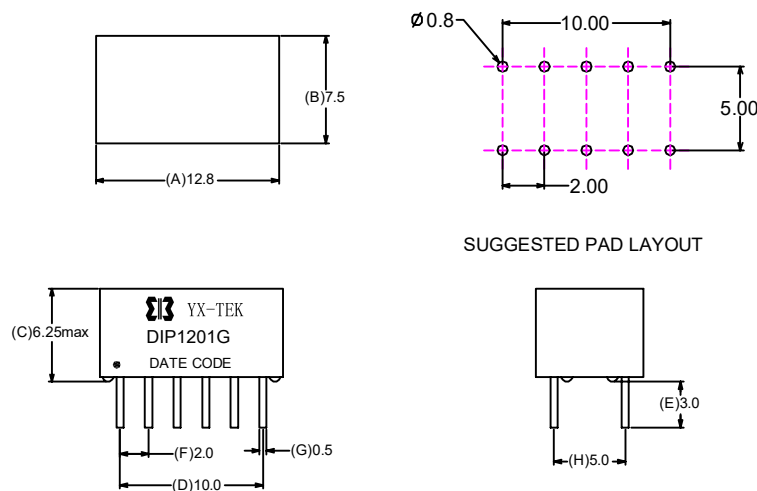
Lead-Free&Designed To Meet RoHS Requirement.

10/100 Base-T Through-Hole Type

Operating temperature range: 0 °C to +70 °C .

Electrical Specifications @25°C									
Part Number	OCL(uH Min) @100KHz,0.1V	Turns Ratio (±3%)	Insertion Loss (dB Max)	Return Loss (dB Min)		Cross talk (dB Min)		CMRR (dB Min)	HI-POT (Vrms)
	With 8mA DC Bias			0.5-100MHz	0.5-40MHz	40.1-100MHz	0.5-40MHz		
Dip1201G	350	1CT:1CT	-1.1	-18	-12+20*log(f/80)	-35	-33+20*log(f/50)	-30	1500

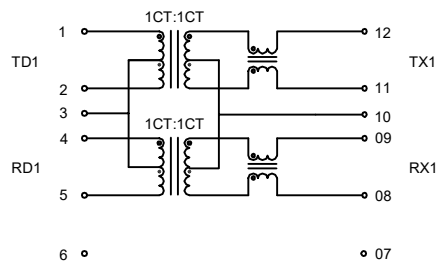
## MECHANICAL



SUGGESTED PAD LAYOUT

Unless otherwise specified all tolerances are:±0.25 in mm

## SCHEMATICS



REV:PRELIMINARY