



Yx-TEK  
亚湘科技

# APPROVED SHEET

CUSTOMER: \_\_\_\_\_

CUSTOMER P/N: \_\_\_\_\_

P/N:

SMD2411MG

REV:

R1

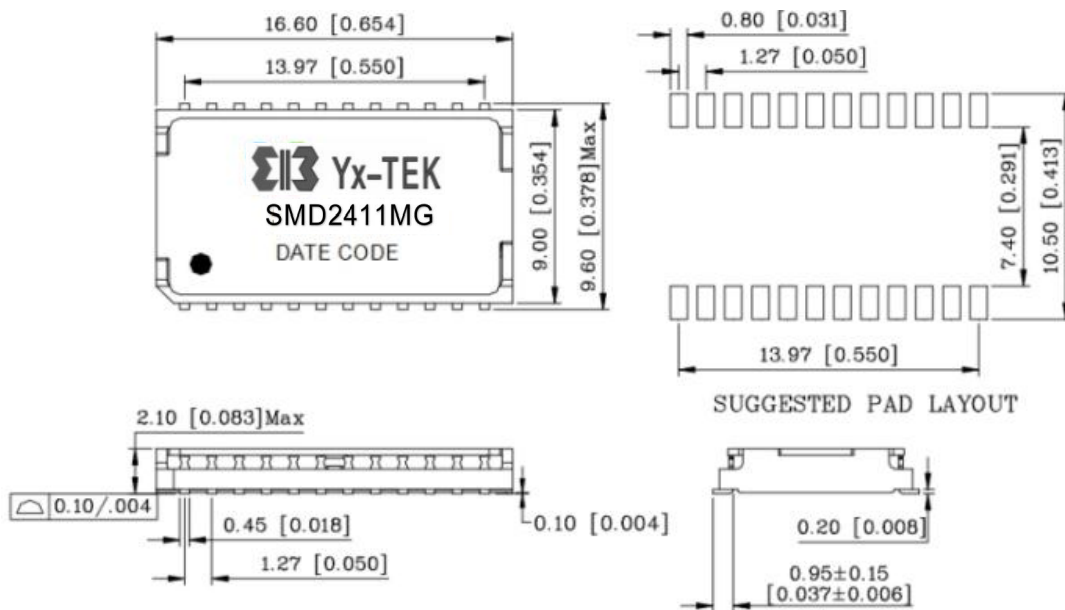
DESCRIPTION:

100/1000 Base-T Single Port Surface Mount Magnetics

CUSTOMER APPROVAL		COMPANY APPROVAL	
			
INSPECTED BY:		ISSUED BY:	Yang.Z
CHECKED BY:		CHECKED BY:	An.L
APPROVED BY:		APPROVED BY:	Mcdull
APPROVED DATE:		ISSUED DATE:	Feb.02.2022

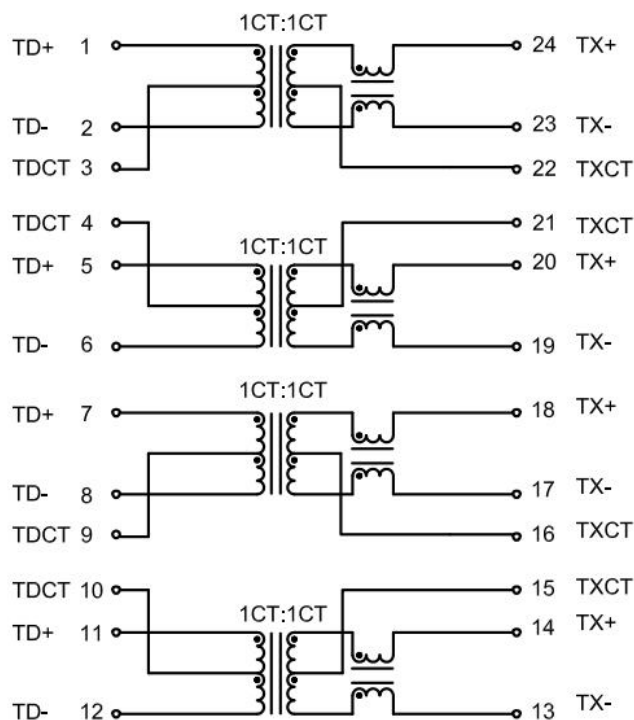
Please Return One Copy to Us After Approved,TKS! (承认后请回寄一份,谢谢)

## A: MECHANICAL



Unless otherwise specified all tolerances are: ±0.25 in mm

## B: SCHEMATICS



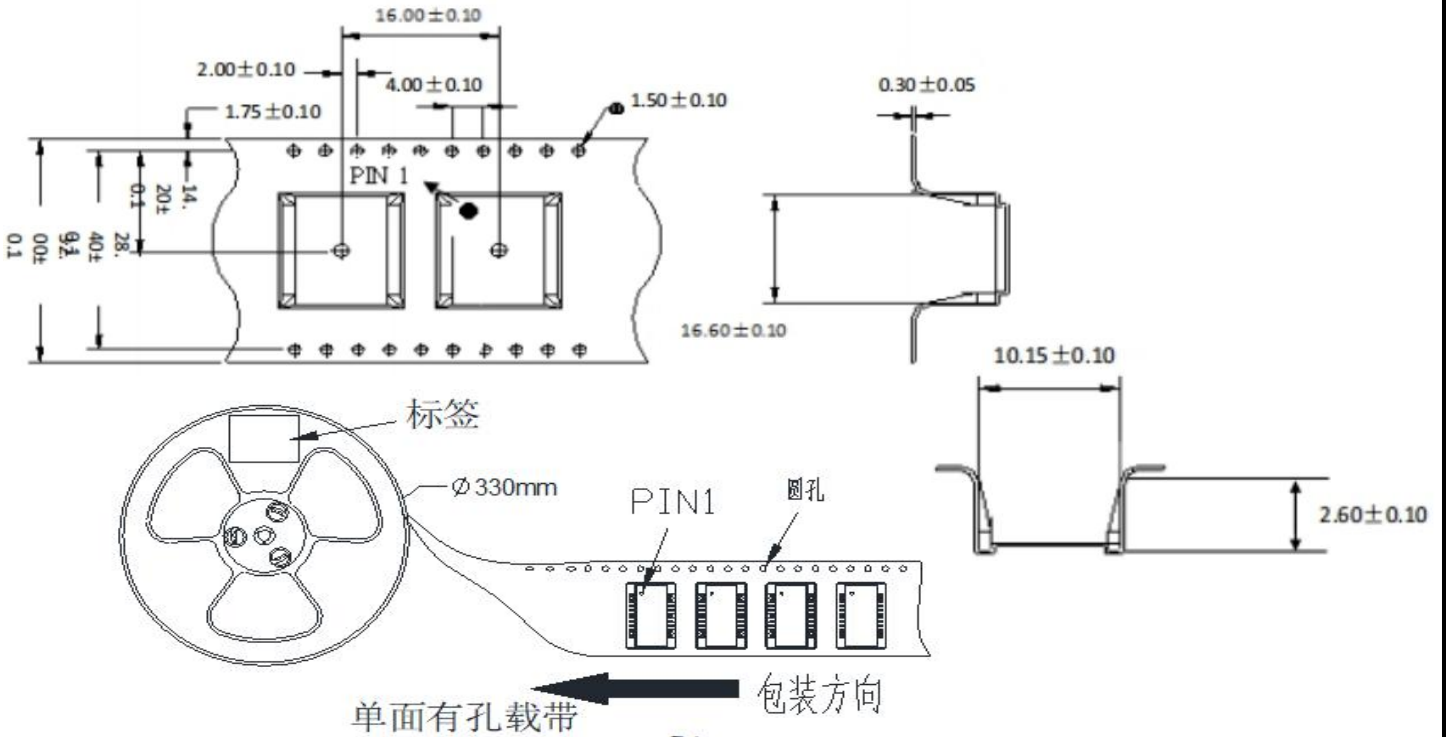
DESCRIPTION	YX P/N	SPEC NO.	REV: R1
100/1000 Base-T	SMD2411MG		PAGE: 1/3

### C. ELECTRICAL SPECIFICATIONS @25°C

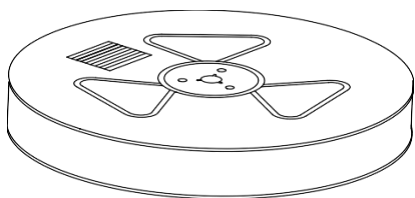
1. OCL: 350 uH Min @ 100 KHz, 0.1V.
2. Leakage Inductance: 0.5uH Max @ 100KHz, 0.1V
3. DCR: 1400mΩ Max
4. Turns Ratio: 1CT:1CT±5%
5. Insertion Loss: -1.1 dB Max @ 0.5-100 MHz
6. Return Loss: -18 dB Min @ 0.5-40 MHz  
-12+20\*log(f/80) dB Min @ 40.1-100 MHz
7. Cross Talk: -35 dB Min @ 0.5-40 MHz  
-33+20\*log(f/50) @ 40.1-100 MHz
8. Common Mode Rejection: -30 dB Min @ 0.5-100 MHz
9. Isolation Hipot: 1500VAC 1mA 60S.
10. Operating temperature -40°C to +85°C.
11. Storage temperature -40°C to +125°C.
12. MSL: grade 1.
13. Compliant RoHS-6.

DESCRIPTION	YX P/N	SPEC NO.	REV: R1
100/1000 Base-T	SMD2411MG		PAGE: 2/3

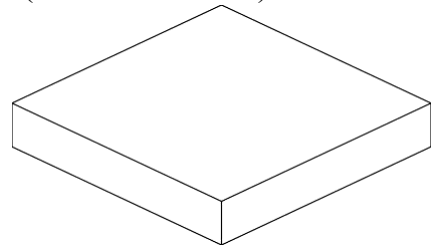
## D. PACKAGE INFORMATION



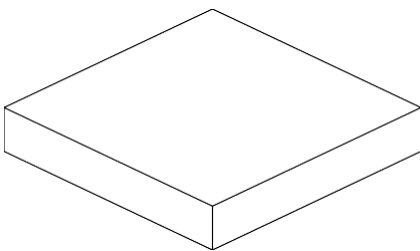
备注: 每卷载带前空15PCS格,后空15PCS格(靠近卷轴端为前)



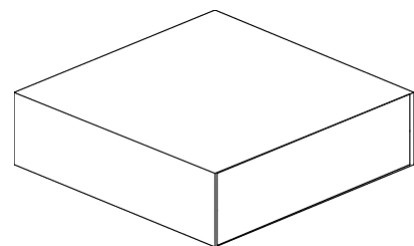
reel



Inner Carton



Inner Carton



Export Carton

Package Quantity

One Reel=1100Pcs

One Inner Carton=1100\*1=1100Pcs

One Export Carton=1100\*5=5500Pcs

DESCRIPTION	YX P/N	SPEC NO.	REV: R1
100/1000 Base-T	SMD2411MG		PAGE: 3/3